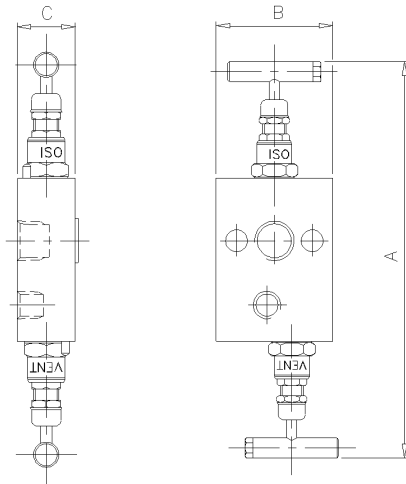


Product Data Sheet

Y24 and Y25 Type 2 Valve Manifold



The 'Y24' and 'Y25' Type 2-valve manifold is designed for direct mounting to static pressure transmitters. The separate vent valve gives full control of venting of the instrument, plus the ability to calibrate in-situ. Each needle valve head is designed for safe and reliable isolation, giving bubble tight shut off, with non-rotating & anti-galling tip and dynamic self-adjusting spindle seal to give long service life in a variety of service conditions.

| Part No. | Connections Size* | A | B | C | Weight (Kgs) |
|----------|-------------------|-----|-----|-----|--------------|
| Y24 | 1/2" F x FLANGE | 8.5 | 2.5 | 1.2 | 1.4 |
| Y25 | FLANGE x FLANGE | 8.5 | 2.5 | 1.2 | 1.4 |

Key Features of the Oliver Needle Valve range

- Non rotating tip - self centering & anti-galling
- Piston ring - gives dynamic adjustment of gland seal in response to pressure change
- Anti-blow out spindle - a major safety feature
- Secure seal - precision machined to give leak free operation for the life of the valve. Available in either PTFE or graphite foil

Standard Specification

| | | | |
|---|------------------|--|---------------------|
| Pressure: 6000psi | Packing: PTFE | Handle: T-Bar | Bore: 0.21" (5.4mm) |
| Temp: 240 deg C | Thread form: NPT | Seat: Metal to metal | CV: 0.46 |
| 2 x 7/16" UNF bolts for mounting to transmitter | | 1 x PTFE or graphite foil seal ring for transmitter flange | |
| 1/2" Connection (on Y24) | | 1/4" NPT Vent Connection | |

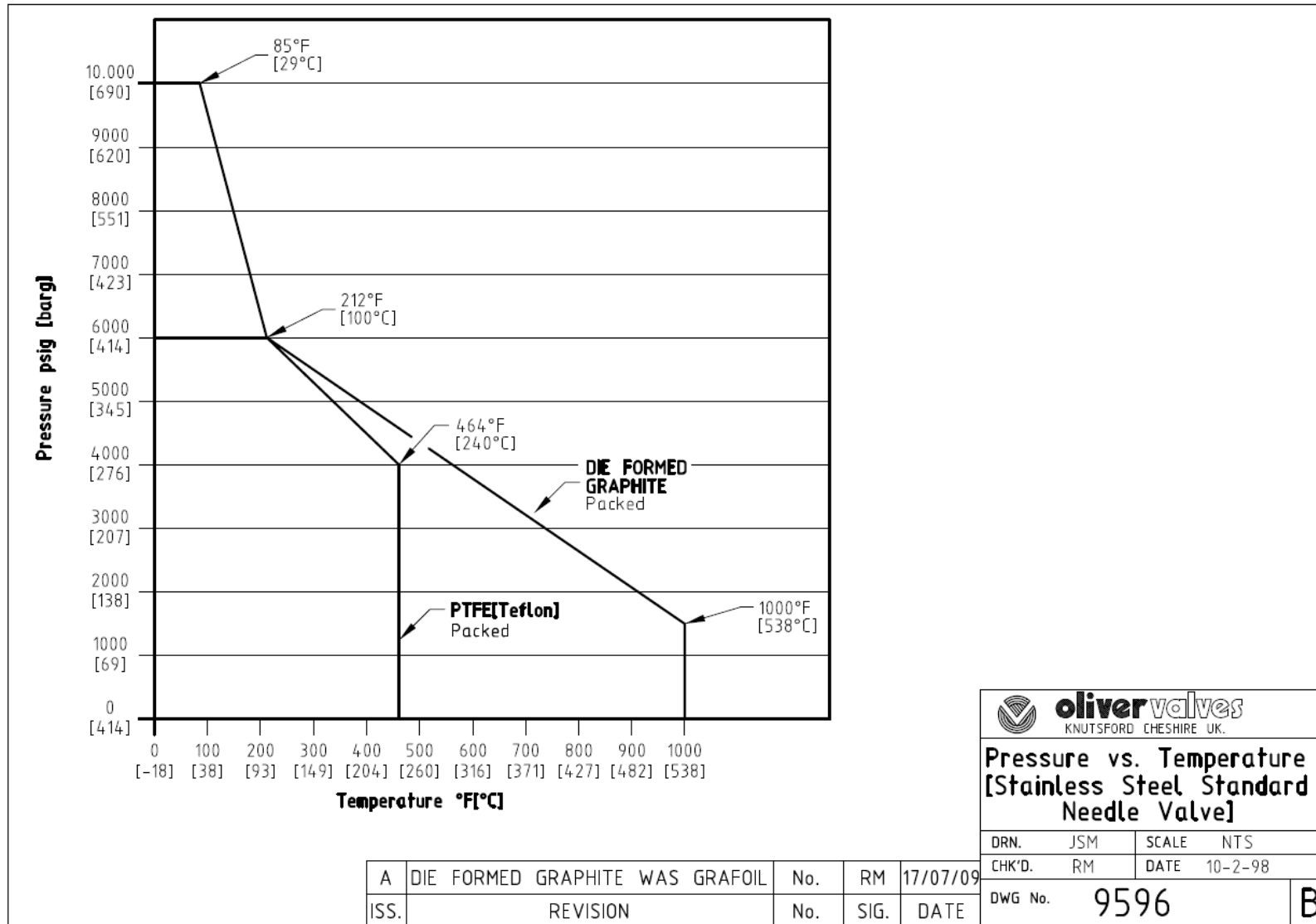
Ordering Code


| (Typical example) → | | Y24 | S | / | BT | / | AT |
|--|--|-----|---|---|---|---|----|
| Type | | | | | | | |
| | Y24 - Female x Flanged Y25 - Flanged x Flanged | | | | | | |
| Material | | | | | | | |
| | S - 316S31 Stainless Steel M - Monel (400) | | HC - Hastalloy (C276) (Others available) | | | | |
| Optional Connections (NPT Standard) | | | | | | | |
| | BT - BSP Taper (Y24 only) BP - BSP Parallel (top sealing) (Y24 only) BTV - BSP Taper Vent | | | | BPV - BSP Parallel Vent FSW - Female Socket Weld (Y24 only) | | |
| Options | | | | | | | |
| | AG - Graphite Foil AT - Anti-Tamper BKTC - Carbon steel mounting bracket BKTS - Stainless steel mounting bracket HL - Handle Locking HL-PI - Handle Locking + Position Indicator HW - Hand Wheel LT100 - Cryogenic Head Unit (-100°C) | | | | MT - Metering Tip MTG - Tapped Mounting Holes x 2 NA - NACE MR-01-75 (latest revision) OXY - Oxygen Cleaned PK - PEEK Soft Tip PP - Blank Plug In Vent Connection SSB - Stainless steel transmitter mounting bolts (4800 psi max pressure rating) | | |

Rev 1.2

Oliver Valves Ltd, Parkgate Industrial Estate, Knutsford, Cheshire, WA16 8DX. United Kingdom.

T: +44 (0)1565 632636 E: sales@valves.co.uk W: www.valves.co.uk



| | | | |
|---|-------------|-------|----------|
|  oliver valves <small>KNUTSFORD CHESHIRE UK.</small> | | | |
| Pressure vs. Temperature [Stainless Steel Standard Needle Valve] | | | |
| DRN. | JSM | SCALE | NTS |
| CHK'D. | RM | DATE | 10-2-98 |
| DWG No. | 9596 | | B |

| | | | | |
|------|---------------------------------|-----|------|----------|
| A | DIE FORMED GRAPHITE WAS GRAFOIL | No. | RM | 17/07/09 |
| ISS. | REVISION | No. | SIG. | DATE |

Oliver Valves Ltd, Parkgate Industrial Estate, Knutsford, Cheshire, WA16 8DX. United Kingdom.

T: +44 (0)1565 632636 E: sales@valves.co.uk W: www.valves.co.uk